



USF-2 Polyclonal Antibody

Catalog No	YP-Ab-02151
Isotype	IgG
Reactivity	Human;Mouse;Rat
Applications	WB;IHC;IF;ELISA
Gene Name	USF2
Protein Name	Upstream stimulatory factor 2
Immunogen	The antiserum was produced against synthesized peptide derived from human USF2. AA range:196-245
Specificity	USF-2 Polyclonal Antibody detects endogenous levels of USF-2 protein.
Formulation	Liquid in PBS containing 50% glycerol, 0.5% BSA and 0.02% sodium azide.
Source	Polyclonal, Rabbit,IgG
Purification	The antibody was affinity-purified from rabbit antiserum by affinity-chromatography using epitope-specific immunogen.
Dilution	WB: 1/500 - 1/2000. IHC: 1/100 - 1/300. ELISA: 1/20000.. IF 1:50-200
Concentration	1 mg/ml
Purity	≥90%
Storage Stability	-20°C/1 year
Synonyms	USF2; BHLHB12; Upstream stimulatory factor 2; Class B basic helix-loop-helix protein 12; bHLHb12; FOS-interacting protein; FIP; Major late transcription factor 2; Upstream transcription factor 2
Observed Band	40kD
Cell Pathway	Nucleus.
Tissue Specificity	Ubiquitous.
Function	alternative products:Additional isoforms seem to exist,function:Transcription factor that binds to a symmetrical DNA sequence (E-boxes) (5'-CACGTG-3') that is found in a variety of viral and cellular promoters.,similarity:Contains 1 basic helix-loop-helix (bHLH) domain.,subunit:Interacts with MAF (By similarity). Efficient DNA binding requires dimerization with another bHLH protein. Binds DNA as an homodimer or a heterodimer (USF1/USF2). In vivo, the USF1/USF2A heterodimer represents over 66% of the usf binding activity whereas the USF1 and USF2A homodimers represent less than 10%. The USF1/USF2B heterodimer accounted for almost 15% in some cell.,tissue specificity:Ubiquitous.,
Background	This gene encodes a member of the basic helix-loop-helix leucine zipper family of transcription factors. The encoded protein can activate transcription through pyrimidine-rich initiator (Inr) elements and E-box motifs and is involved in



regulating multiple cellular processes. [provided by RefSeq, Mar 2016],

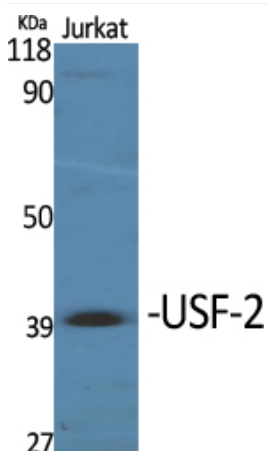
matters needing attention

Avoid repeated freezing and thawing!

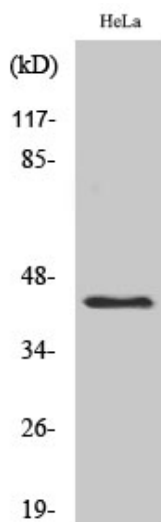
Usage suggestions

This product can be used in immunological reaction related experiments. For more information, please consult technical personnel.

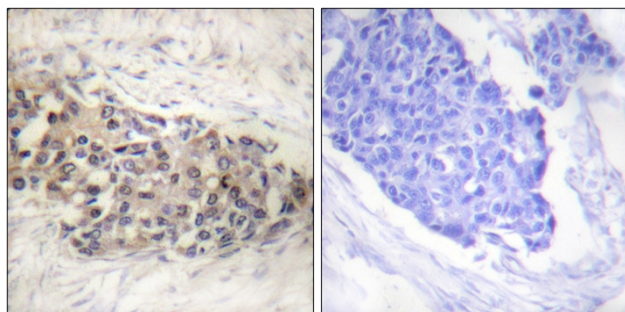
Products Images



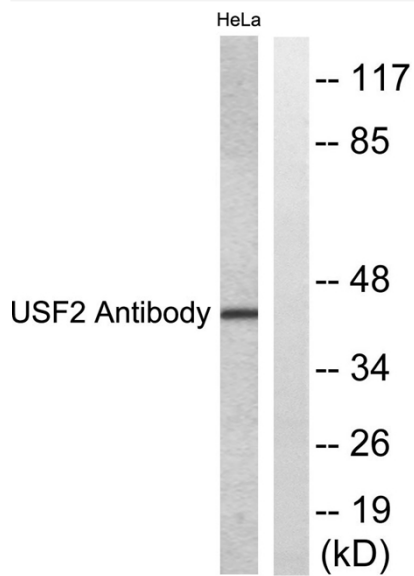
Western Blot analysis of various cells using USF-2 Polyclonal Antibody. Secondary antibody(catalog#:RS0002) was diluted at 1:20000 cells nucleus extracted by Minute TM Cytoplasmic and Nuclear Fractionation kit (SC-003, Inventbiotech, MN, USA).



Western Blot analysis of HeLa cells using USF-2 Polyclonal Antibody. Secondary antibody(catalog#:RS0002) was diluted at 1:20000 cells nucleus extracted by Minute TM Cytoplasmic and Nuclear Fractionation kit (SC-003, Inventbiotech, MN, USA).



Immunohistochemistry analysis of paraffin-embedded human breast carcinoma tissue, using USF2 Antibody. The picture on the right is blocked with the synthesized peptide.



Western blot analysis of lysates from HeLa cells, using USF2 Antibody. The lane on the right is blocked with the synthesized peptide.